

## Kate Wisniewski MA

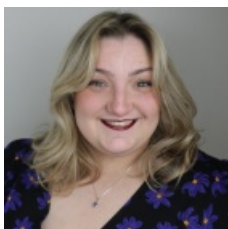
Clinical Research Coordinator

- [facebook](#)
- [twitter](#)
- [linkedin](#)
  
- [Print Page](#)
- [Email Page](#)

Kate Wisniewski is a clinical research coordinator at PolicyLab and the Department of Child and Adolescent Psychiatry & Behavioral Sciences at Children's Hospital of Philadelphia (CHOP). She is currently working with Dr. Njoroge on the Prenatal to Preschool (P2P) longitudinal study, which aims to investigate the impacts of the COVID-19 pandemic on early child development and maternal mental health. Additionally, the project aims to characterize the effects of the syndemic on Black families.

Ms. Wisniewski received her Master of Art in Psychological Sciences with a focus in research from Rutgers University – Camden. While at Rutgers, as a psychology fellow, she worked as a research assistant for the Walter Rand Institute of Public Affairs. Although involved in several projects, she primarily worked to evaluate a social emotional learning program implemented in underfunded southern New Jersey schools as well as evaluating access to and quality of healthcare in Atlantic County for marginalized populations. Prior to receiving her master's degree, she graduated from West Chester University of Pennsylvania with a Bachelor of Science in Psychology. While at West Chester, she worked as a lead undergraduate research assistant for a lab on campus and helped to implement a trauma-based relief program to children who were experiencing post-traumatic stress symptoms.

Her research experiences sparked her interests in social determinants of health, pediatric clinical research, access to health care for marginalized communities and the effect of trauma on family systems.



Kate Wisniewski  
MA

Email: [wisniewskk@chop.edu](mailto:wisniewskk@chop.edu)

### Research Interests

[Evidence-based Prevention, Screening & Treatment](#)  
[Early Childhood](#)  
[Maternal-Child Health](#)  
[Equitable Access to Services](#)  
[Integration into Schools](#)  
[Public Systems & Community Programs](#)

### Recent Blog Posts